

“I plan on applying to medical school after my undergraduate studies, and much of that is because of the opportunity AHEC provided me back in high school. Through the program AHEC created, I was given the courage, the knowledge, and the experience to pursue a career in medicine with confidence.”

**ANGEL DE LA TORRE**  
Pre-medical student at the University of Michigan



“My summer Biomedical Career Advancement Program experience gave me the opportunity to interact with doctors and nurses, as well as conduct research. These skills are highly valuable toward my future career as a surgeon.”

**SALMA ALDUAIS**  
Biomedical Career Advancement Program Student



“I’ve always had an interest in rural health care. I spent my first semester in clinical at MI-AHEC at the Houghton Lake Urgent Care. I am really loving it there. I work with a great team that has really embraced me and they have really supported me throughout this learning curve.”

**RACHEL REAUME, BSN**  
FNP student



4201 St. Antoine UHC, Suite 9A, Box 325  
Detroit, MI 48201

Phone: 313-577-5161  
Fax: 313-577-5181

E-mail: miahec@wayne.edu  
Website: miahec.wayne.edu



**WAYNE STATE**  
UNIVERSITY



## CREATING A BETTER STATE OF HEALTH IN MICHIGAN



## ABOUT AHEC

According to the federal and state government, 79 of Michigan’s 83 counties have at least partial designation as primary care health professional shortage areas. Michigan Area Health Education Program (MI-AHEC) was established in 2010 to address these shortages. MI-AHEC strengthens the state’s health care workforce by recruiting, training, and retaining health professionals committed to increasing access to primary care in underserved urban and rural communities.

Through a network of five (5) regional centers statewide, MI-AHEC prepares underrepresented minority and disadvantaged (URMD) youth for health care careers, promotes clinical training opportunities for students and provides continuing education programs for health professionals working in underserved communities.

MI-AHEC’s statewide network of regional centers (Detroit, Grand Rapids, Mt. Pleasant, Houghton Lake and Marquette) are locally managed by Community Advisory Boards and partnerships supported by U.S. Health Resources and Services Administration (HRSA), Wayne State University, local foundations, academic institutions, associations and nonprofits.

# GOALS

## DIVERSITY, DISTRIBUTION, PRACTICE TRANSFORMATION



Increase the diversity and distribution of health professions students and practitioners through targeted training and partnerships in underserved and rural communities.

Support practice transformation in primary care urban and rural underserved community practices through strategic partnerships with local, regional and state agencies to improve patient health outcomes.



Develop strategic and innovative programs with statewide partners through collaborations focused on addressing health care disparities and access issues.

# PROGRAM AREAS



Health careers recruitment in underserved and urban areas to expose high school students from underrepresented rural and urban areas to health professions careers.

Learning experiences for health professions students at community based sites with an emphasis on interdisciplinary programs.

AHEC Scholars Program supports health professions students from a variety of disciplines who originate from underserved rural and urban areas.



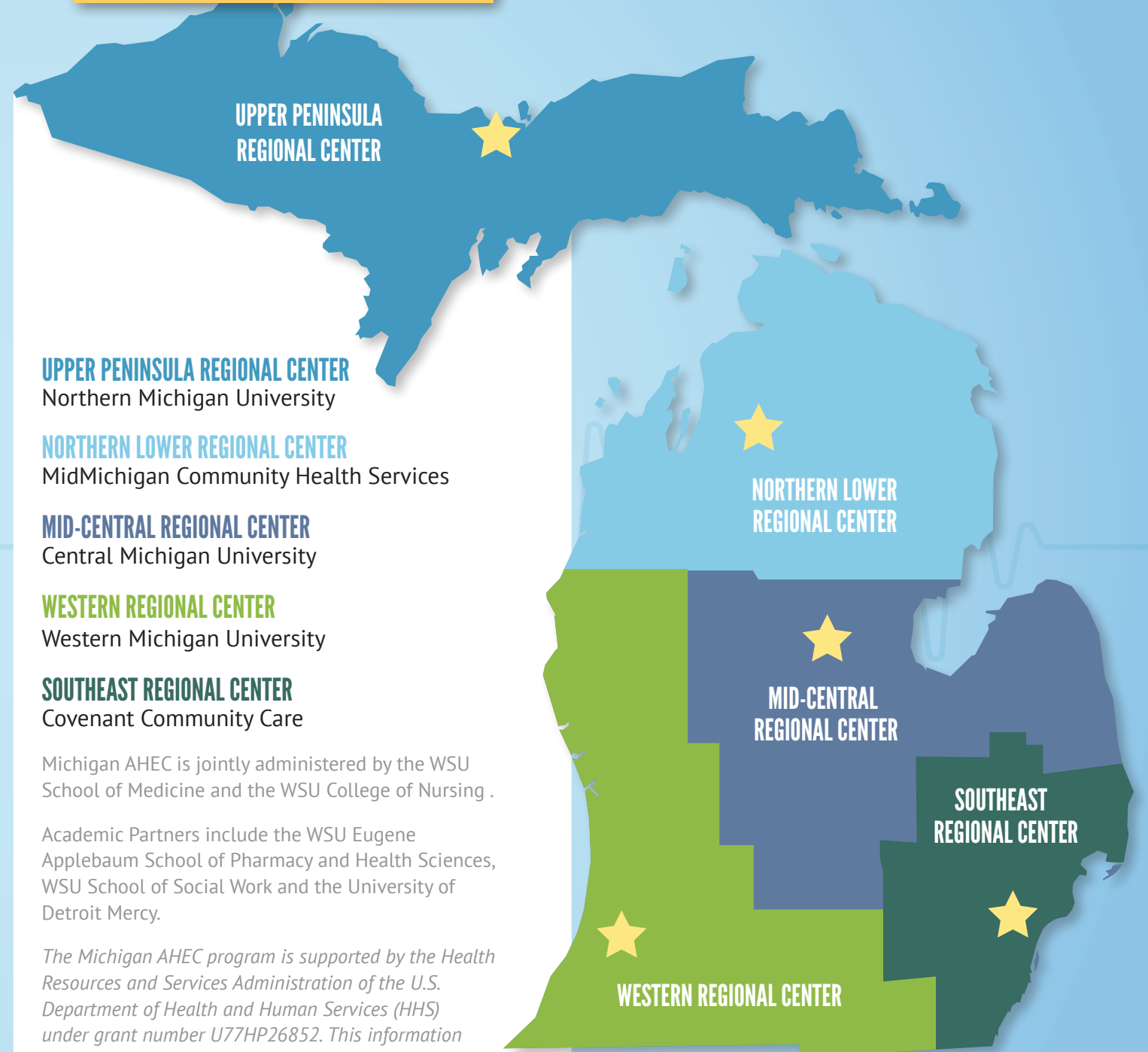
Continuing education opportunities for health professionals to enhance the practice environment and help them to provide high quality care in underserved communities.



Partnerships with local organizations on joint projects and activities that are focused on distribution, diversity and practice transformation of health care resources throughout the state.



# HOSTING AND ACADEMIC PARTNERS



**UPPER PENINSULA REGIONAL CENTER**

**UPPER PENINSULA REGIONAL CENTER**  
Northern Michigan University

**NORTHERN LOWER REGIONAL CENTER**  
MidMichigan Community Health Services

**MID-CENTRAL REGIONAL CENTER**  
Central Michigan University

**WESTERN REGIONAL CENTER**  
Western Michigan University

**SOUTHEAST REGIONAL CENTER**  
Covenant Community Care

Michigan AHEC is jointly administered by the WSU School of Medicine and the WSU College of Nursing .

Academic Partners include the WSU Eugene Applebaum School of Pharmacy and Health Sciences, WSU School of Social Work and the University of Detroit Mercy.

*The Michigan AHEC program is supported by the Health Resources and Services Administration of the U.S. Department of Health and Human Services (HHS) under grant number U77HP26852. This information or content and conclusions are those of the author and should not be construed as the official position or policy of nor should any endorsements be inferred by HRSA, HHS or the U.S. Government.*